

CANNE IDRICHE A GETTO PIENO Mod. FI – LI

WATER BRANCHPIPE FULL JET Mod. FI – LI

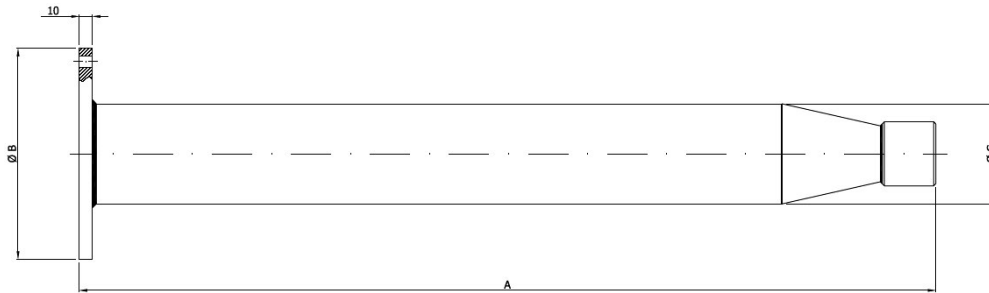


Caratteristiche

- Corpo: in acciaio inox
- Attacco: flangiato
- Ugello: acciaio inox

Characteristics

- Body: stainless steel
- Connection: flanged
- Nozzle: stainless steel



MODELLO/MODEL	A	B	C	PORTATA / FLOW RATE
FI - LI 10	1000	160	3"	800-1200
FI - LI 15	1000	160	3"	1200-1500
FI - LI 20	1000	160	3"	1500-2000
FI - LI 25	1000	160	3"	2000-2300
FI - LI 30	1000	160	3"	2400-3500
FI - LI 40	1000	160	4"	3500-4500
FI - LI 50	1000	240	4"	4200-5500
FI - LI 60	1000	240	4"	4800-6000
FI - LI 70	1000	240	5"	5800-7000
FI - LI 80	1000	240	5"	6500-8000
FI - LI 100	1000	240	5"	7500-10000

Throw Curves

